

gas fired water boilers



Wall Hung Modulating Condensing Boiler

- Up to 95% AFUE
- Natural Gas or Propane
- OLSSC
- 50-299 MBH

- Built-In Primary/Secondary Piping cuts installation time in half
- Built-In Low Water Cut Off
- 5:1 Turn Down Ratio
- Original Heat Exchanger
 - Low Maintenance, Self-Cleaning
 - Designed in North America, for North America
 - 150 psi MAWP

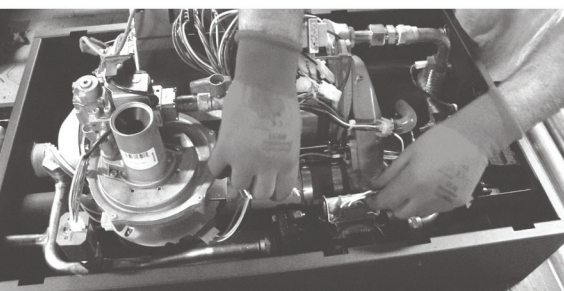


keeping families warm for more than 60 years



The Olsen OLSSC "Stainless Steel Condensing" boiler features our own unique 316L/444 stainless steel heat exchanger designed in North America, for North America. This vertically mounted heat exchanger features wide, smooth water ways that help remove hard water deposits and prevent scaling which ultimately means longer life and better value.

Olsen has been keeping families warm for more than 60 years. We take pride in having grown up right alongside the generations we serve with products that continue to meet your ever changing needs. That's why we have added a 299 MBH capacity to our OLSSC offering and introduced the H2O Series - a full line of Stainless Steel, Single and Dual Coil Indirect Water Heaters, Buffer Tanks and Storage Tanks. An Olsen OLSSC and an H2O Stainless Steel Indirect Water Heater are the perfect match.



Just look at what you could be savin annually...

Add up the savings with a Olsen OLSSC:

- + Up to 95% AFUE
- + Sealed Combustion
- + Outdoor Temperature Reset*

The increased efficiency of the OLSSC could save you up to 40% on your heating bill each year.

If you pay \$1,800 annually to heat your home, you could save as much as \$720 per year.

That's \$3,600 over 5 years!**

* A factory standard Outdoor Temperature Reset adjusts water supply temperature for best possible fuel economy based on actual seasonal conditions.

** Individual savings may vary.

- ▶ Olsen H2O Indirect Water Heaters are available in 30 to 150 gallon capacities and also feature 316L stainless steel construction as well as top connections for ease of installation. In terms of efficiency, the H2O is so well insulated that water will lose only a half degree for every hour on standby. Like the OLSSC, the H2O's smooth coil design prevents corrosion so it is also an excellent value.
- ▶ Each Olsen OLSSC boiler produced is subjected to a rigorous set of quality control checks before it leaves our factory. Olsen test fires each boiler and checks all of the electrical, plumbing, pressure vessel and combustion set up parameters - fine tuning the product's performance prior to approving the unit for shipment. We even include the final computer generated results for your professional contractor to reference while completing your installation.
- ▶ Since we go the extra mile to deliver a quality product we offer not only a 15 year limited manufacturer's warranty, we also back it up with an industry-leading first year \$500 Heat Exchanger Labor Warranty.
- ▶ Our H2O Single Coil Indirect Water Heaters feature a limited lifetime warranty.



OLSSC 50-200 MBH



Integral Condensate Trap ▲

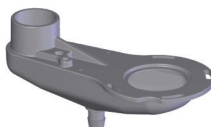
- Large Diameter
- Quick connect to condensate drain or pump

Heat Exchanger



- 316L/444 stainless steel fin tube
- Vertically mounted
- Self-cleaning
- Designed in North America, for North America
- 150 psi MAWP

Non-Metallic Flue Collector



- Corrosion resistant

LWCO



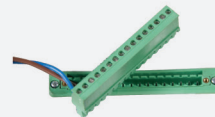
- Factory wired and installed
- Probe-type with test button
- Meets code where required
- Provides added protection

Control Features



- 5:1 Turn down ratio
- Easy to understand English text display
- Outdoor reset maximizes fuel economy
- Priority domestic hot water meets changing demands
- Integrated multiple boiler control eliminates the need for costly multiple boiler controls
- Can be remotely mounted with standard thermostat conductor wiring

Quick Connect



- Simplified electrical connection and removable terminal block make wiring easy

Top Connections



- Approved for PVC, CPVC and Polypropylene venting

Bottom Connections



- Replacement ready with 1-1/4" piping connections and low pressure drop
- no high head pump required

Wall Mount Bracket



- Bracket included
- Wall mount installation saves space

OLSSC 299 MBH



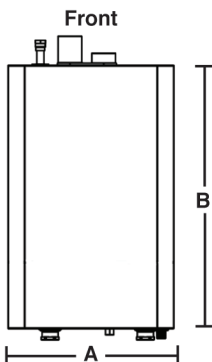
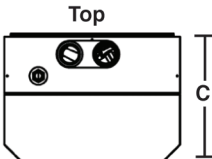
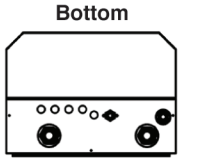
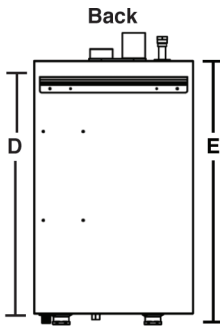






299 Dual Diameter Heat Exchanger with polypropylene flue collector



- 316L/444 stainless steel fin tube
- Vertically mounted
- Self-cleaning
- Designed in North America, for North America
- 150 psi MAWP

► Built-in primary/secondary piping on all models saves installation time and space

Olsen OLSSC Natural or Propane Gas-Fired Modulating Condensing Hot Water Boiler

Dimensions/Weights	Model	Boiler Input Rate (MBH) ⁽¹⁾		Heating Capacity (MBH) ⁽¹⁾⁽²⁾	Net AHRI Rating, Water (MBH) ^{(1) (3)}	AFUE % ⁽²⁾		
		Max.	Min.					
	OLSSC-050	50	10	46	40	95.0		
	OLSSC-075	75	15	69	60	95.0		
	OLSSC-100	100	20	91	79	95.0		
	OLSSC-150	150	30	139	121	95.0		
	OLSSC-200*	200	40	185	161	94.0		
	OLSSC-299*	299	60	273	239	94.0		
*The UBSSC-200 and UBSSC-299 have an AFUE of 95% and are ENERGY STAR rated products but they do not meet the criteria for 2013 Most Efficient.								
(1) 1000 Btu/hr (British Thermal Units Per Hour)								
(2) Heating Capacity and AFUE (Annual Fuel Utilization Efficiency) are based on DOE (Department of Energy) test procedures.								
(3) Net AHRI Ratings based on piping and pickup allowance of 1.15. Contact Technical Support before selecting boiler for installations having unusual piping and pickup requirements, such as intermittent system operation, extensive piping systems, etc.								
General Information (See Installation, Operation and Maintenance Manual for complete instructions)								
 	Clearances (4) Required distances measured from boiler. (5) Service, proper operation clearance recommendation.	Top		Combustible Materials (Required) ⁽⁴⁾		Service ⁽⁵⁾		
		Top		0" (0 cm)		14" (36 cm)		
		Left Side		0" (0 cm)		0" (0 cm)		
		Right Side		0" (0 cm)		0" (0 cm)		
		Front		0" (0 cm)		6" (16 cm)		
		Back		0" (0 cm)		0" (0 cm)		
		Bottom		0" (0 cm)		12" (32 cm)		
		Combustion Air/Vent Piping		0" (0 cm)		6" (16 cm)		
Hot Water Piping		See Local Code		6" (16 cm)				
	Combustion Air & Vent Pipe Equivalent Length (Schedule 40 PVC)	Min. Length	2" Pipe 050	2" Pipe 075/100	3" Pipe 075/100	3" Pipe 150/200	3" Pipe 299	4" Pipe 299
			6 Ft. (1.8 m)	6 Ft. (1.8 m)	6 Ft. (1.8 m)	6 Ft. (1.8 m)	6 Ft. (1.8 m)	6 Ft. (1.8 m)
		Max. Length	100 Ft. (30.5 m)	50 Ft. (15.2 m)	100 Ft. (30.5 m)	100 Ft. (30.5 m)	25 Ft. (7.7 m)	100 Ft. (30.5 m)
			Note: Refer to IOM and vent pipe manufacturer's instructions for equivalent vent lengths and alternate venting materials.					
Connections		Return/Supply Water		Gas In		Condensate Drain		
050/075/100		1-1/4" NPT		1/2" NPT		3/4" NPT		
150/200/299		1-1/4" NPT		3/4" NPT		3/4" NPT		
Electrical		120 Volts AC, 60 hertz, 1 phase, Less than 12 amps (15 amp circuit recommended)						
Water Content		050/075/100 - 1.1 Gallons, 150/200/299 - 1.8 Gallons						
Standard Equipment		Wall Mounted: Bracket included. Boiler Control Module: Automatic Line Voltage/Intermittent Direct Spark Ignition/Modulating with a 5:1 combustion turn down ratio. For multiple boiler applications – the control module can stage up 16 boilers. User Display interface: Easy programming with text display. Outdoor Temperature Sensor included. Heat Exchanger: High grade 316L/444 Stainless Steel Fin Coil with Flame Sight Glass. Built-in Primary/Secondary Manifold Piping and Pump. Combustion: Gas Valve with Premix Venturi and Blower, Durable Stainless Steel Mesh Modulating Burner with 5:1 turn down ratio, Direct Spark Igniter, Flame Sensor and LP Conversion Kit included. Electrical: Detachable Low Voltage Terminal Strip, High Voltage Junction Box and Transformer. Other: Factory installed probe-type Low Water Cut Off with test feature, 30 PSI Safety Relief Valve, Boiler Drain Valve and Condensate Drain with built in trap.						
Options		Central Heating Pump available for 50 to 200 MBH only (Grundfos UP15-42F), Concentric Vent Kit (2" and 3"), System Sensor (For Multiple Boiler Applications)						
Certifications		     						

All ratings and specifications subject to change.

PN 240009037 Rev. 6/13



ECR International
 2201 Dwyer Ave., Utica, NY 13504
 Tel: 315-797-1310 or 800-325-5479
 Fax: 315-724-9319
www.olsenhvac.com

In Canada:
 Contact ECR Master Representative:
 Morden National Sales
 Tel: 519-627-0791
 Fax: 866-835-6667