

# oil furnaces

keeping families warm for more than 60 years



## Reliable, Efficient Home Heating:

- Variable Speed Technology
- Easy Installation & Maintenance
- Optional Cooling Up to 5 Tons

### Lowboy

BCL, BFL, BML, BMLV  
59,000 - 237,000 BTU

### Highboy

HML, HMLV, HTL, HTLV  
59,000 - 113,000 BTU

### Multiposition

WML, WMLV, MPL  
59,000 - 128,000 BTU



# Olsen Home Heating Economics 101

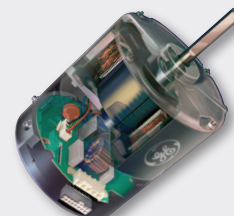
An oil furnace uses two energy sources, oil to produce heat and electricity to power the fan motor but there's more to consider than just that.

FEATURE:	BENEFIT:	ADDITIONAL BENEFITS:
<b>OIL COSTS</b>		
<b>Higher Olsen AFUE Ratings</b> (Annual Fuel Utilization Efficiency)	<b>= Lower Fuel Costs</b>	<b>+ Bonus Cash Back</b> (Through energy efficiency rebates).*
<b>ELECTRICITY COSTS</b>		
<b>Olsen Variable Speed Technology</b> An oil furnace with an ECM (Electronically Commutated Motor) can reduce electricity consumption up to †80%.	<b>= Lower Electric Costs</b>	<b>+ Bonus Cash Back</b> (Through energy efficiency rebates).*
<b>OTHER COSTS AND CONSIDERATIONS</b>		
<b>DIRECT VENT SIDEWALL</b> <b>Olsen Direct Sidewall Venting</b> As homes age, the chimney can become costly to maintain or repair.	<b>- Eliminates Chimney Costs</b> <b>+ Increases Combustion Efficiency</b>	Requires only one wall opening, an Olsen Direct Sidewall Vent Kit (includes all connections from the furnace) and an Olsen concentric vent.  (The Olsen vent terminal utilizes a two-pipe combustion air/exhaust gas configuration. Outside air is used for combustion resulting in greater efficiency and safety. The burner provides the necessary pressure for venting of flue products – no additional motors or controls are needed).
<b>Superior Heat Exchanger Design</b>	<b>+ Delivers Higher AFUE</b>	Double Pass Heat Exchanger (Heavy-gauge construction and large surface area maximize heat transfer) Dual Clean Outs (Provide easy access for quick, efficient routine maintenance)
<b>Service &amp; Maintenance</b> Equipped for easy service and maintenance.	<b>= Lower Costs of Good Design</b>	Features like the slide out blower tray on high-boy models provide technicians easy access to critical components. Full length rails eliminate annoying/time consuming remounting of blower and motor housings, saving time and money on service.
<b>Quiet Operation</b>	<b>= Better Quality Comfort</b>	Most high-boy and low-boy Olsen furnaces come standard with a vestibule which provides sound attenuation, reducing operating noise. The vestibule also provides added protection for the burner.
<b>Warranty &amp; Peace of Mind</b> Olsen furnaces are designed to provide years of trouble-free operation.	<b>+ Limited Lifetime Warranty (Heat Exchanger), 5 Years Parts</b>	

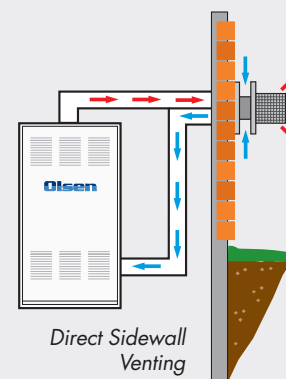
\*(Check with your local government agencies and/or utilities regarding the availability of rebates and incentives).  
†Individual savings may vary.



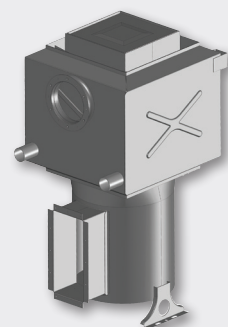
Calculate Your Savings



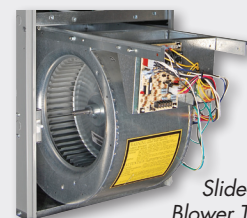
ECM Fan Motor



Direct Sidewall Venting



Superior Heat Exchanger



Slide-out Blower Tray

# LOWBOY MODELS

BREECH	FURNACE DIMENSIONS (INCHES)			MODEL	FIRING RATE GPH	INPUT/ OUTPUT MBH¹	AFUE EFFICIENCY % RATING				
							CHIMNEY VENT			DIRECT VENT	
	HEIGHT	WIDTH	DEPTH				BECKETT	BECKETT NX	RIELLO F	BECKETT AFII	RIELLO BF
REAR FLUE MODEL	41	22	51½	BCL90S2	0.75	105/90	85.5%				
				BCL90S2							
				BCL90S2							
				BCL90ST2							
				BCL100S2	0.85	119/100	83.2%				
				BCL100S2							
				BCL100S2							
				BCL100ST2							
				<b>BCL120S2</b>	1.00	140/118	84.4%				
				<b>BCL120S2</b>							
				<b>BCL120S2</b>							
				<b>BCL120ST2</b>							
				BCL130S2	1.10	154/130	84.5%				
				BCL130S2							
				BCL130ST2							
	<b>BCL145S2</b>	1.20	168/141	84.0%							
	<b>BCL145S2</b>										
	<b>BCL145ST2</b>										
	56	26	49	BCL170-2	1.50	210/177	83.3%				
				<b>BCL190</b>	1.65	231/194	83.7% T				
				BCL200	1.75	245/205	83.7% T				
				BCL225	2.00	280/237	84.6% T				
	41	22	51½	BCL90SRF2	0.75	105/91	Chimney Vented with Riello F		87.2%		
				<b>BCL100SRF2</b>	0.85	119/102	86.2%				
				BCL90SB2U2	0.75	105/91	Direct Vented with Beckett AF II				87.1%
				<b>BCL100SB2U2</b>	0.85	119/102					86.0%
				BCL120SB2U2	1.00	140/119					85.1%
FRONT FLUE MODEL	41	22	51½	BFL90-2	0.75	105/88	83.8%				
				BFL90-2							
				BFL90-2							
				BFL90T2							
				BFL100-2	0.85	119/100	83.6%				
				BFL100-2							
				BFL100-2							
				BFL100T2							
				<b>BFL120-2</b>	1.00	140/114	83.0%				
				<b>BFL120-2</b>							
				<b>BFL120-2</b>							
				<b>BFL120T2</b>							
				BFL130-2	1.00	154/128	82.4%				
				BFL130-2							
				BFL130T2							
				<b>BFL145-2</b>	1.20	168/139	81.8%				
				<b>BFL145-2</b>							
				<b>BFL145ST2</b>							
				<b>BFL145NX2</b>	1.20	168/139	Chimney Vented with Beckett NX		83.1%		
				<b>BFL145NX2</b>							
				<b>BFL145TNX2</b>							
				BFL90RF-2	0.75	105/90	Chimney Vented with Riello F		85.6%		
<b>BFL100RF2</b>	0.85	119/102	85.3%								
BFL90B2U2	0.75	105/90	Direct Vented with Beckett AF II				86.4%				
<b>BFL100B2U2</b>	0.85	119/101					85.4%				
BFL120B2U2	1.00	140/117					83.7%				

GREEN TINTED AREA indicates models sold in Canada only. **BOLD TYPE** indicates factory equipped firing rate. Other firing rates shown utilize field supplied nozzles. T = Thermal Efficiency



AVAILABLE MOTOR DRIVES			AC RANGE IN TONS BASED ON 400 CFM PER TON AIR FLOW @ 0.50" W.C. (CFM RANGE)	COOLING COILS SELECTION					
ECM (V) VARIABLE FAN SPEED	PSC DIRECT DRIVE	PSC BELT DRIVE							
		1/3 HP		<b>BCL 90 to 145 Cased Cooling Coils</b>  2 ton      CC24A3G-220R-066 2.5 ton    CC30C3G-220R-066 3 ton       CC36B3G-220R-066 3.5 ton    CC42C3G-220R-066 4 ton       CC48B3G-220R-066 5 ton       CC60D3G-260R-066					
		1/2 HP							
	1/2 HP		3 to 4 tons (1000 - 1600)						
	1 HP		3 to 5 tons (1300 - 2000)						
		1/3 HP				<b>BCL 170 to 225 Cased Cooling Coil</b>  3 to 4 ton      N/A 5 ton           CC60D3G-260R-066			
		1/2 HP							
	1/2 HP		3 to 4 tons (1000 - 1600)						
	1 HP		3 to 5 tons (1300 - 2000)						
		1/2 HP						<b>BCL 90 to 120 Cased Cooling Coils</b>  2 ton      CC24A3G-220R-066 3 ton       CC36B3G-220R-066 3.5 ton    CC42C3G-220R-066	
	1/2 HP		3 to 4 tons (1000 - 1600)						
	1 HP		3 to 5 tons (1300 - 2000)						
		3/4 HP		<b>BFL Cased Cooling Coils</b>  2 ton      CC24A3G-220R-066 2.5 ton    CC30C3G-220R-066 3 ton       CC36B3G-220R-066 3.5 ton    CC42C3G-220R-066 4 ton       CC48B3G-220R-066 5 ton       CC60D3G-260R-066					
		3/4 HP							
	1 HP		3 to 4 tons (1300 - 1550)						
	1 HP		3 to 5 tons (1600 - 2200)						
	1/2 HP					<b>BCL 90 to 120 Cased Cooling Coils</b>  2 ton      CC24A3G-220R-066 3 ton       CC36B3G-220R-066 3.5 ton    CC42C3G-220R-066			
		1/3 HP						<b>BCL 90 to 120 Cased Cooling Coils</b>  2 ton      CC24A3G-220R-066 3 ton       CC36B3G-220R-066 3.5 ton    CC42C3G-220R-066	
		1/2 HP							
	1/2 HP		3 to 4 tons (1000 -1600)						
	1 HP		3 to 5 tons (1300 - 2000)						
		1/3 HP		<b>BCL 90 to 120 Cased Cooling Coils</b>  2 ton      CC24A3G-220R-066 3 ton       CC36B3G-220R-066 3.5 ton    CC42C3G-220R-066					
		1/2 HP							
	1/2 HP		3 to 4 tons (1000 - 1600)						
	1 HP		3 to 5 tons (1300 - 2000)						
		1/3 HP				<b>BCL 90 to 120 Cased Cooling Coils</b>  2 ton      CC24A3G-220R-066 3 ton       CC36B3G-220R-066 3.5 ton    CC42C3G-220R-066			
		1/2 HP							
	1/2 HP		3 to 4 tons (1000 - 1600)						
	1 HP		3 to 5 tons (1300 - 2000)						
		1/2 HP						<b>BCL 90 to 120 Cased Cooling Coils</b>  2 ton      CC24A3G-220R-066 3 ton       CC36B3G-220R-066 3.5 ton    CC42C3G-220R-066	
	1/2 HP		3 to 4 tons (1000 - 1600)						
	1 HP		3 to 5 tons (1300 - 2000)						
		1/2 HP		<b>BCL 90 to 120 Cased Cooling Coils</b>  2 ton      CC24A3G-220R-066 3 ton       CC36B3G-220R-066 3.5 ton    CC42C3G-220R-066					
	1/2 HP		3 to 4 tons (1000 - 1600)						
	1 HP		3 to 5 tons (1300 - 2000)						
		1/2 HP				<b>BCL 90 to 120 Cased Cooling Coils</b>  2 ton      CC24A3G-220R-066 3 ton       CC36B3G-220R-066 3.5 ton    CC42C3G-220R-066			
	1/2 HP		3 to 4 tons (1000 - 1600)						
	1 HP		3 to 5 tons (1300 - 2000)						
		1/2 HP						<b>BCL 90 to 120 Cased Cooling Coils</b>  2 ton      CC24A3G-220R-066 3 ton       CC36B3G-220R-066 3.5 ton    CC42C3G-220R-066	
	1/2 HP		3 to 4 tons (1000 - 1600)						
	1 HP		3 to 5 tons (1300 - 2000)						
		1/2 HP		<b>BCL 90 to 120 Cased Cooling Coils</b>  2 ton      CC24A3G-220R-066 3 ton       CC36B3G-220R-066 3.5 ton    CC42C3G-220R-066					
	1/2 HP		3 to 4 tons (1000 - 1600)						
	1 HP		3 to 5 tons (1300 - 2000)						
		1/2 HP				<b>BCL 90 to 120 Cased Cooling Coils</b>  2 ton      CC24A3G-220R-066 3 ton       CC36B3G-220R-066 3.5 ton    CC42C3G-220R-066			
	1/2 HP		3 to 4 tons (1000 - 1600)						
	1 HP		3 to 5 tons (1300 - 2000)						
		1/2 HP						<b>BCL 90 to 120 Cased Cooling Coils</b>  2 ton      CC24A3G-220R-066 3 ton       CC36B3G-220R-066 3.5 ton    CC42C3G-220R-066	
	1/2 HP		3 to 4 tons (1000 - 1600)						
	1 HP		3 to 5 tons (1300 - 2000)						
		1/2 HP		<b>BCL 90 to 120 Cased Cooling Coils</b>  2 ton      CC24A3G-220R-066 3 ton       CC36B3G-220R-066 3.5 ton    CC42C3G-220R-066					
	1/2 HP		3 to 4 tons (1000 - 1600)						
	1 HP		3 to 5 tons (1300 - 2000)						
		1/2 HP				<b>BCL 90 to 120 Cased Cooling Coils</b>  2 ton      CC24A3G-220R-066 3 ton       CC36B3G-220R-066 3.5 ton    CC42C3G-220R-066			
	1/2 HP		3 to 4 tons (1000 - 1600)						
	1 HP		3 to 5 tons (1300 - 2000)						
		1/2 HP						<b>BCL 90 to 120 Cased Cooling Coils</b>  2 ton      CC24A3G-220R-066 3 ton       CC36B3G-220R-066 3.5 ton    CC42C3G-220R-066	
	1/2 HP		3 to 4 tons (1000 - 1600)						
	1 HP		3 to 5 tons (1300 - 2000)						
		1/2 HP		<b>BCL 90 to 120 Cased Cooling Coils</b>  2 ton      CC24A3G-220R-066 3 ton       CC36B3G-220R-066 3.5 ton    CC42C3G-220R-066					
	1/2 HP		3 to 4 tons (1000 - 1600)						
	1 HP		3 to 5 tons (1300 - 2000)						
		1/2 HP				<b>BCL 90 to 120 Cased Cooling Coils</b>  2 ton      CC24A3G-220R-066 3 ton       CC36B3G-220R-066 3.5 ton    CC42C3G-220R-066			
	1/2 HP		3 to 4 tons (1000 - 1600)						
	1 HP		3 to 5 tons (1300 - 2000)						
		1/2 HP						<b>BCL 90 to 120 Cased Cooling Coils</b>  2 ton      CC24A3G-220R-066 3 ton       CC36B3G-220R-066 3.5 ton    CC42C3G-220R-066	
	1/2 HP		3 to 4 tons (1000 - 1600)						
	1 HP		3 to 5 tons (1300 - 2000)						
		1/2 HP		<b>BCL 90 to 120 Cased Cooling Coils</b>  2 ton      CC24A3G-220R-066 3 ton       CC36B3G-220R-066 3.5 ton    CC42C3G-220R-066					
	1/2 HP		3 to 4 tons (1000 - 1600)						
	1 HP		3 to 5 tons (1300 - 2000)						
		1/2 HP				<b>BCL 90 to 120 Cased Cooling Coils</b>  2 ton      CC24A3G-220R-066 3 ton       CC36B3G-220R-066 3.5 ton    CC42C3G-220R-066			
	1/2 HP		3 to 4 tons (1000 - 1600)						
	1 HP		3 to 5 tons (1300 - 2000)						
		1/2 HP						<b>BCL 90 to 120 Cased Cooling Coils</b>  2 ton      CC24A3G-220R-066 3 ton       CC36B3G-220R-066 3.5 ton    CC42C3G-220R-066	
	1/2 HP		3 to 4 tons (1000 - 1600)						
	1 HP		3 to 5 tons (1300 - 2000)						
		1/2 HP		<b>BCL 90 to 120 Cased Cooling Coils</b>  2 ton      CC24A3G-220R-066 3 ton       CC36B3G-220R-066 3.5 ton    CC42C3G-220R-066					
	1/2 HP		3 to 4 tons (1000 - 1600)						
	1 HP		3 to 5 tons (1300 - 2000)						
		1/2 HP				<b>BCL 90 to 120 Cased Cooling Coils</b>  2 ton      CC24A3G-220R-066 3 ton       CC36B3G-220R-066 3.5 ton    CC42C3G-220R-066			
	1/2 HP		3 to 4 tons (1000 - 1600)						
	1 HP		3 to 5 tons (1300 - 2000)						
		1/2 HP						<b>BCL 90 to 120 Cased Cooling Coils</b>  2 ton      CC24A3G-220R-066 3 ton       CC36B3G-220R-066 3.5 ton    CC42C3G-220R-066	
	1/2 HP		3 to 4 tons (1000 - 1600)						
	1 HP		3 to 5 tons (1300 - 2000)						
		1/2 HP		<b>BCL 90 to 120 Cased Cooling Coils</b>  2 ton      CC24A3G-220R-066 3 ton       CC36B3G-220R-066 3.5 ton    CC42C3G-220R-066					
	1/2 HP		3 to 4 tons (1000 - 1600)						
	1 HP		3 to 5 tons (1300 - 2000)						
		1/2 HP				<b>BCL 90 to 120 Cased Cooling Coils</b>  2 ton      CC24A3G-220R-066 3 ton       CC36B3G-220R-066 3.5 ton    CC42C3G-220R-066			
	1/2 HP		3 to 4 tons (1000 - 1600)						
	1 HP		3 to 5 tons (1300 - 2000)						
		1/2 HP						<b>BCL 90 to 120 Cased Cooling Coils</b>  2 ton      CC24A3G-220R-066 3 ton       CC36B3G-220R-066 3.5 ton    CC42C3G-220R-066	
	1/2 HP		3 to 4 tons (1000 - 1600)						
	1 HP		3 to 5 tons (1300 - 2000)						
		1/2 HP		<b>BCL 90 to 120 Cased Cooling Coils</b>  2 ton      CC24A3G-220R-066 3 ton       CC36B3G-220R-066 3.5 ton    CC42C3G-220R-066					
	1/2 HP		3 to 4 tons (1000 - 1600)						
	1 HP		3 to 5 tons (1300 - 2000)						
		1/2 HP				<b>BCL 90 to 120 Cased Cooling Coils</b>  2 ton      CC24A3G-220R-066 3 ton       CC36B3G-220R-066 3.5 ton    CC42C3G-220R-066			
	1/2 HP		3 to 4 tons (1000 - 1600)						
	1 HP		3 to 5 tons (1300 - 2000)						
		1/2 HP						<b>BCL 90 to 120 Cased Cooling Coils</b>  2 ton      CC24A3G-220R-066 3 ton       CC36B3G-220R-066 3.5 ton    CC42C3G-220R-066	
	1/2 HP		3 to 4 tons (1000 - 1600)						
	1 HP		3 to 5 tons (1300 - 2000)						
		1/2 HP		<b>BCL 90 to 120 Cased Cooling Coils</b>  2 ton      CC24A3G-220R-066 3 ton       CC36B3G-220R-066 3.5 ton    CC42C3G-220R-066					
	1/2 HP		3 to 4 tons (1000 - 1600)						
	1 HP		3 to 5 tons (1300 - 2000)						
		1/2 HP				<b>BCL 90 to 120 Cased Cooling Coils</b>  2 ton      CC24A3G-220R-066 3 ton       CC36B3G-220R-066 3.5 ton    CC42C3G-220R-066			
	1/2 HP		3 to 4 tons (1000 - 1600)						
	1 HP		3 to 5 tons (1300 - 2000)						
		1/2 HP						<b>BCL 90 to 120 Cased Cooling Coils</b>  2 ton      CC24A3G-220R-066 3 ton       CC36B3G-220R-066 3.5 ton    CC42C3G-220R-066	
	1/2 HP		3 to 4 tons (1000 - 1600)						
	1 HP		3 to 5 tons (1300 - 2000)						
		1/2 HP		<b>BCL 90 to 120 Cased Cooling Coils</b>  2 ton      CC24A3G-220R-066 3 ton       CC36B3G-220R-066 3.5 ton    CC42C3G-220R-066					
	1/2 HP		3 to 4 tons (1000 - 1600)						
	1 HP		3 to 5 tons (1300 - 2000)						
		1/2 HP				<b>BCL 90 to 120 Cased Cooling Coils</b>  2 ton      CC24A3G-220R-066 3 ton       CC36B3G-220R-066 3.5 ton    CC42C3G-220R-066			
	1/2 HP		3 to 4 tons (1000 - 1600)						
	1 HP		3 to 5 tons (1300 - 2000)						
		1/2 HP						<b>BCL 90 to 120 Cased Cooling Coils</b>  2 ton      CC24A3G-220R-066 3 ton       CC36B3G-220R-066 3.5 ton    CC42C3G-220R-066	
	1/2 HP		3 to 4 tons (1000 - 1600)						
	1 HP		3 to 5 tons (1300 - 2000)						
		1/2 HP		<b>BCL 90 to 120 Cased Cooling Coils</b>  2 ton      CC24A3G-220R-066 3 ton       CC36B3G-220R-066 3.5 ton    CC42C3G-220R-066					
	1/2 HP		3 to 4 tons (1000 - 1600)						
	1 HP		3 to 5 tons (1300 - 2000)						
		1/2 HP				<b>BCL 90 to 120 Cased Cooling Coils</b>  2 ton      CC24A3G-220R-066 3 ton       CC36B3G-220R-066 3.5 ton    CC42C3G-220R-066			
	1/2 HP		3 to 4 tons (1000 - 1600)						
	1 HP		3 to 5 tons (1300 - 2000)						
		1/2 HP						<b>BCL 90 to 120 Cased Cooling Coils</b>  2 ton      CC24A3G-220R-066 3 ton       CC36B3G-220R-066 3.5 ton    CC42C3G-220R-066	
	1/2 HP		3 to 4 tons (1000 - 1600)						
	1 HP		3 to 5 tons (1300 - 2000)						
		1/2 HP		<b>BCL 90 to 120 Cased Cooling Coils</b>  2 ton      CC24A3G-220R-066 3 ton       CC36B3G-220R-066 3.5 ton    CC42C3G-220R-066					
	1/2 HP		3 to 4 tons (1000 - 1600)						
	1 HP		3 to 5 tons (1300 - 2000)						
		1/2 HP				<b>BCL 90 to 120 Cased Cooling Coils</b>  2 ton      CC24A3G-220R-066 3 ton       CC36B3G-220R-066 3.5 ton    CC42C3G-220R-066			
	1/2 HP		3 to 4 tons (1000 - 1600)						
	1 HP		3 to 5 tons (1300 - 2000)						
		1/2 HP						<b>BCL 90 to 120 Cased Cooling Coils</b>  2 ton      CC24A3G-220R-066 3 ton       CC36B3G-220R-066 3.5 ton    CC42C3G-220R-066	
	1/2 HP		3 to 4 tons (1000 - 1600)						
	1 HP		3 to 5 tons (1300 - 2000)						
		1/2 HP		<b>BCL 90 to 120 Cased Cooling Coils</b>  2 ton      CC24A3G-220R-066 3 ton       CC36B3G-220R-066 3.5 ton    CC42C3G-220R-066					
	1/2 HP		3 to 4 tons (1000 - 1600)						
	1 HP		3 to 5 tons (1300 - 2000)						
		1/2 HP				<b>BCL 90 to 120 Cased Cooling Coils</b>  2 ton      CC24A3G-220R-066 3 ton       CC36B3G-220R-066 3.5 ton    CC42C3G-220R-066			
	1/2 HP		3 to 4 tons (1000 - 1600)						
	1 HP		3 to 5 tons (1300 - 2000)						
		1/2 HP						<b>BCL 90 to 120 Cased Cooling Coils</b>  2 ton      CC24A3G-220R-066 3 ton       CC36B3G-220R-066 3.5 ton    CC42C3G-220R-066	
	1/2 HP		3 to 4 tons (1000 - 1600)						
	1 HP		3 to 5 tons (1300 - 2000)						
		1/2 HP		<b>BCL 90 to 120 Cased Cooling Coils</b>  2 ton      CC24A3G-220R-066 3 ton       CC36B3G-220R-066 3.5 ton    CC42C3G-220R-066					
	1/2 HP		3 to 4 tons (1000 - 1600)						
	1 HP		3 to 5 tons (1300 - 2000)						
		1/2 HP				<b>BCL 90 to 120 Cased Cooling Coils</b>  2 ton      CC24A3G-220R-066 3 ton       CC36B3G-220R-066 3.5 ton    CC42C3G-220R-066			
	1/2 HP		3 to 4 tons (1000 - 1600)						
	1 HP		3 to 5 tons (1300 - 2000)						
		1/2 HP						<b>BCL 90 to 120 Cased Cooling Coils</b>  2 ton      CC24A3G-220R-066 3 ton       CC36B3G-220R-066 3.5 ton    CC42C3G-220R-066	
	1/2 HP		3 to 4 tons (1000 - 1600)						
	1 HP		3 to 5 tons (1300 - 2000)						
		1/2 HP		<b>BCL 90 to 120 Cased Cooling Coils</b>  2 ton      CC24A3G-220R-066 3 ton       CC36B3G-220R-066 3.5 ton    CC42C3G-220R-066					
	1/2 HP		3 to 4 tons (1000 - 1600)						
	1 HP		3 to 5 tons (1300 - 2000)						
		1/2 HP				<b>BCL 90 to 120 Cased Cooling Coils</b>  2 ton      CC24A3G-220R-066 3 ton       CC36B3G-220R-066 3.5 ton    CC42C3G-220R-066			
	1/2 HP		3 to 4 tons (1000 - 1600)						
	1 HP		3 to 5 tons (1300 - 2000)						
		1/2 HP						<b>BCL 90 to 120 Cased Cooling Coils</b>  2 ton      CC24A3G-220R-066 3 ton       CC36B3G-220R-066 3.5 ton    CC42C3G-220R-066	
	1/2 HP		3 to 4 tons (1000 - 1600)						
	1 HP		3 to 5 tons (1300 - 2000)						
		1/2 HP		<b>BCL 90 to 120 Cased Cooling Coils</b>  2 ton      CC24A3G-220R-066 3 ton       CC36B3G-220R-066 3.5 ton    CC42C3G-220R-066					
	1/2 HP		3 to 4 tons (1000 - 1600)						
	1 HP		3 to 5 tons (1300 - 2000)						
		1/2 HP				<b>BCL 90 to 120 Cased Cooling Coils</b>  2 ton      CC24A3G-220R-066 3 ton       CC36B3G-220R-066 3.5 ton    CC42C3G-220R-066			
	1/2 HP		3 to 4 tons (1000 - 1600)						
	1 HP		3 to 5 tons (1300 - 2000)						
		1/2							

LOWBOY MODELS (continued)

BREECH	FURNACE DIMENSIONS (INCHES)			MODEL	FIRING RATE GPH	INPUT/ OUTPUT MBH¹	AFUE EFFICIENCY %		
							CHIMNEY VENT		
	HEIGHT	WIDTH	DEPTH				BECKETT	BECKETT NX	RIELLO F
REAR FLUE MODEL	32	22	51½	BML60B2	0.50	70/59	84.0%		
				BML60B2					
				BMLV60B2					
				<b>BML80B2</b>	0.65	91/76	84.0%		
				<b>BML80B2</b>					
				<b>BMLV80B2</b>					
				BML90B2	0.75	105/85	83.0%		
				BML90B2					
				BMLV90B2					
				BML60BRF2	0.50	70/60	Chimney Vented with Riello F		
				BML60BRF2					
				BMLV60BRF2					
				<b>BML80BRF2</b>	0.65	91/77	Chimney Vented with Riello F		
				<b>BML80BRF2</b>					
				<b>BMLV80BRF2</b>					
				BML90BRF2	0.75	105/88	Chimney Vented with Riello F		
				BML90BRF2					
				BMLV90BRF2					
				BML60BB2U2	0.55	70/59	Direct Vented with Beckett AF II		
				BML60BB2U2					
				BMLV60BB2U2					
				<b>BML80BB2U2</b>	0.65	91/76	Direct Vented with Beckett AF II		
				<b>BML80BB2U2</b>					
				<b>BMLV80BB2U2</b>					
				BML90BB2U2	0.75	105/88	Direct Vented with Beckett AF II		
				BML90BB2U2					
				BMLV90BB2U2					
				BML60BRBU2	0.50	70/61	Direct Vented with Riello BF		
				BML60BRBU2					
				BMLV60BRBU2					
				<b>BML80BRBU2</b>	0.65	91/78	Direct Vented with Riello BF		
				<b>BML80BRBU2</b>					
				<b>BMLV80BRBU2</b>					
				BML90BRBU2	0.75	105/89	Direct Vented with Riello BF		
				BML90BRBU2					
				BMLV90BRBU2					

**BOLD TYPE** indicates factory equipped firing rate. Other firing rates shown utilize field supplied nozzles.

RATING		AVAILABLE MOTOR DRIVES			AC RANGE IN TONS BASED ON 400 CFM PER TON AIR FLOW @ 0.50" W.C. (CFM RANGE)	COOLING COILS SELECTION
DIRECT VENT		ECM (V) VARIABLE FAN SPEED	PSC DIRECT DRIVE	PSC BELT DRIVE		
BECKETT AFII	RIELLO BF			1/2 HP	PSC Motor Airflow Ratings 2 to 3.5 Tons (700-1400)  ECM Motor Airflow Ratings (V Models) 1/2 HP ECM Motor 600-1200 cfm @ 0.5" w.c.	<b>BML Cased Cooling Coils</b>  2 ton      CC24A3G-220R-066 2.5 ton    CC30C3G-220R-066 3 ton        CC36B3G-220R-066
		1/2 HP ECM	1/2 HP			
		1/2 HP ECM	1/2 HP	1/2 HP		
		1/2 HP ECM	1/2 HP			
		1/2 HP ECM	1/2 HP	1/2 HP		
		1/2 HP ECM	1/2 HP			
		1/2 HP ECM	1/2 HP	1/2 HP		
		1/2 HP ECM	1/2 HP			
85.6%		1/2 HP ECM	1/2 HP	1/2 HP		
		1/2 HP ECM	1/2 HP			
84.3%		1/2 HP ECM	1/2 HP	1/2 HP		
		1/2 HP ECM	1/2 HP			
83.8%		1/2 HP ECM	1/2 HP	1/2 HP		
		1/2 HP ECM	1/2 HP			
	87.2%	1/2 HP ECM	1/2 HP	1/2 HP		
		1/2 HP ECM	1/2 HP			
	86.1%	1/2 HP ECM	1/2 HP	1/2 HP		
		1/2 HP ECM	1/2 HP			
	84.7%	1/2 HP ECM	1/2 HP	1/2 HP		
		1/2 HP ECM	1/2 HP			

Ratings and specifications are subject to change without notice.

# HIGHBOY MODELS

BREECH	FURNACE DIMENSIONS (INCHES)			MODEL	FIRING RATE GPH	INPUT/ OUTPUT MBH¹	AFUE EFFICIENCY % RATING				
							CHIMNEY VENT			DIRECT VENT	
	HEIGHT	WIDTH	DEPTH				BECKETT	BECKETT NX	RIELLO F	BECKETT AFII	RIELLO BF
FRONT FLUE MODEL	49 5/8	22	30 3/4	HML60C2	0.50	70/59	83.1%				
				HMLV60C2							
				HML80C2	0.65	91/76	83.3%				
				HMLV80C2							
				HML90C2	0.75	105/85	81.5%				
				HMLV90C2							
				HML100C2	0.85	119/96	79.1%				
				HMLV100C2							
				HML60CNX2	0.50	70/60	Chimney Vented with Beckett NX	86.4%			
				HMLV60CNX2							
				HML80CNX2	0.65	91/76		85.7%			
				HMLV80CNX2							
				HML90CNX2	0.75	105/88		84.3%			
				HMLV90CNX2							
				HML100CNX2	0.85	119/98		83.4%			
				HMLV100CNX2							
				HML60CRF2	0.50	70/60	Chimney Vented with Riello F	86.3%			
				HMLV60CRF2							
				HML80CRF2	0.65	91/77		85.2%			
				HMLV80CRF2							
				HML90CRF2	0.75	105/87		83.2%			
				HMLV90CRF2							
				HML60CB2U2	0.55	77/65	Direct Vented with Beckett AF II	84.6%			
				HMLV60CB2U2							
				HML80CB2U2	0.65	91/77		83.9%			
				HMLV80CB2U2							
				HML90CB2U2	0.75	105/88		83.3%			
				HMLV90CB2U2							
				HML60CRBU2	0.50	70/61	Direct Vented with Riello BF	86.7%			
				HMLV60CRBU2							
				HML80CRBU2	0.65	91/77		85.4%			
				HMLV80CRBU2							
				HML90CRBU2	0.75	105/88		84.5%			
				HMLV90CRBU2							
	58	22	30 3/4	HTL90DRF2	0.75	105/91	Chimney Vented with Riello F	86.5%			
				HTLV90DRF2							
				HTL100DRF2	0.85	119/102		85.3%			
				HTLV100DRF2							
				HTL115DRF2	0.95	133/113		84.1%			
				HTLV115DRF2							

GREEN TINTED AREA indicates models sold in Canada only. **BOLD TYPE** indicates factory equipped firing rate. Other firing rates shown utilize field supplied nozzles.

AVAILABLE MOTOR DRIVES			AC RANGE IN TONS BASED ON 400 CFM PER TON AIR FLOW @ 0.50" W.C. (CFM RANGE)	COOLING COILS SELECTION
ECM (V) VARIABLE FAN SPEED	PSC DIRECT DRIVE	PSC BELT DRIVE		
(V) 1/2 HP ECM motor 600 – 1200 cfm @ 0.5" w.c.	1/2 HP		2 to 3.5 Tons (690-1500)	<b>HML&amp; HMLV Cased Cooling Coils</b>  <div> <div>2 ton</div> <div>CC24A3G-220R-066</div> </div> <div> <div>2.5 ton</div> <div>CC30C3G-220R-066</div> </div> <div> <div>3 ton</div> <div>CC36B3G-220R-066</div> </div> <div> <div>3.5 ton</div> <div>CC42C3G-220R-066</div> </div>
(V) 1/2 HP ECM motor 600 – 1200 cfm @ 0.5" w.c.	1/2 HP		2 to 3.5 Tons (650-1400)	<b>HTL &amp; HTLV Cased Cooling Coils</b>  <div> <div>2 ton</div> <div>CC24A3G-220R-066</div> </div> <div> <div>2.5 ton</div> <div>CC30C3G-220R-066</div> </div> <div> <div>3 ton</div> <div>CC36B3G-220R-066</div> </div>

Ratings and specifications are subject to change without notice.



MULTI-POSITION HORIZONTAL/DOWN-FLO MODELS

BREECH	FURNACE DIMENSIONS (INCHES)			MODEL	FIRING RATE GPH	INPUT/ OUTPUT MBH'	AFUE EFFICIENCY %				
							CHIMNEY VENT				
	HEIGHT	WIDTH	DEPTH				BECKETT	BECKETT NX	RIELLO F		
FRONT FLUE MODEL	55 1/4	22	22 1/8	WML60C2	0.50	70/59	83.3%				
				WML60C2*							
				WMLV60C2							
				WMLV60C2*							
				WML80C2	0.65	91/76	82.8%				
				WML80C2*							
				WMLV80C2							
				WML90C2	0.75	105/86	81.8%				
				WMLV90C2							
				WML60CNX2	0.50	70/60	Chimney Vented with Beckett NX	86.3%			
				WMLV60CNX2							
				WML80CNX2	0.65	91/77		85.5%			
				WMLV80CNX2							
				WML90CNX2	0.75	105/88		85.0%			
				WMLV90CNX2							
				WML60CRF2	0.51	71/61	Chimney Vented with Riello F	85.2%			
				WMLV60CRF2							
				WML80CRF2	0.65	91/76		83.3%			
				WMLV80CRF2							
				WML90CRF2	0.75	105/88		83.4%			
				WMLV90CRF2							
				WML60CB2U2	0.55	77/63	Direct Vented with Beckett AF II				
				WMLV60CB2U2							
				WML80CB2U2	0.65	91/75					
	WMLV80CB2U2										
	WML90CB2U2	0.75	105/85								
	WMLV90CB2U2										
	WML60CRBU2	0.51	71/62	Direct Vented with Riello BF							
	WMLV60CRBU2										
	WML80CRBU2	0.65	91/78								
	WMLV80CRBU2										
	WML90CRBU2	0.75	105/89								
	WMLV90CRBU2										
	62	22 1/4	22 1/4	MPL90B2	0.75	105/90	85.0%				
MPL100B2				0.85	119/97	83.2%					
MPL120B2				1.00	140/118	83.3%					
MPL130B2				1.10	154/128	82.1%					
MPL90BRF2				0.75	105/92	Chimney Vent with Riello F	86.6%				
MPL100BRF2				0.85	119/101		83.7%				
MPL120BRF2				1.00	140/117		83.8%				
MPL130BRF2				1.10	154/127		83.0%				
MPL90BB2U2				0.75	105/88	Direct Vent with Beckett AF II					
MPL100BB2U2				0.85	119/101						
MPL120BB2U2	1.00	140/118									

GREEN TINTED AREA indicates models sold in Canada only. BOLD TYPE indicates factory equipped firing rate. Other firing rates shown utilize field supplied nozzles.

★ With Vestibule



## Common Features:

### All Olsen Oil Furnaces:

- **Heat Exchanger** – Proven heat exchanger design featuring 100% welded construction for maximum performance. Large accessible clean out ports.
- **Radiator** – “Wrap-around” style for maximum heat transfer.
- **Insulation** – Spun glass and aluminum foil for “hand-cool” cabinet.
- **Burner** – Equipped with industry leading Beckett or Riello oil burners which include oil solenoid valve, PSC motor and solid state controls. Factory assembled, wired and tested. Ready to connect to fuel line.
- **Barometric Draft Control** – Included with all chimney vent models.
- **Blower** – Direct drive or belt drive type. Permanently lubricated, resilient mounted.
- **Blower Assembly** – Entire unit can be easily removed for servicing.
- **Filter Racks & Washable Air Filters** – Included with all models.
- **Alternate firing rates** to fit a wide variety of applications (alternate nozzles are field supplied).



Made in North America,  
Dunkirk, NY Plant.

## Additional Features:

### BCL/BCL-S/BFL Lowboy Models

- **Cabinet construction** – 22 gauge steel cabinet ensures strength and quiet operation. Access door easily removed to access enclosed burner & controls.
- **PSC Blower Motor** – Designed for heavy duty continuous operation. Thermally protected. Four-speed is standard with 1/2 HP direct drive models. Three-speed is standard with 1 HP direct drive models. Single speed with adjustable motor pulley is standard with belt drive models.
- **Controls** – (Honeywell) fan and limit control is standard on all models.
- **Air conditioning** – Prewired fan center relay is standard on all direct drive models.
- **Direct Vent Models** – Include Beckett AFII-150 oil burner with pressure switch system for proving airflow, intake air collar and vent adapter. Vent pipe kits sold separately.

### BML/BMLV Compact Lowboy Models

- **Cabinet construction** – 22 gauge steel cabinet ensures strength and quiet operation. Access door easily removed to access enclosed burner & controls.
- **PSC Blower Motor (BML Models)** – Designed for heavy duty continuous operation. Thermally protected. Four-speed is standard with 1/2 HP direct drive models. Single speed with adjustable motor pulley is standard with belt drive models.
- **ECM Variable Speed Blower Motor (BMLV Models)** – Maximizes air conditioner efficiencies, reduces electrical operating costs and enhances comfort with programmed ramp up and ramp down operation. Available on 1/2 HP direct drive models.
- **Controls** – (UTEC) Electronic fan timer control is standard on all models.
- **Air conditioning** – Fan timer control is AC ready.
- **Direct Vent Models** – Include Beckett AFII-85 or Riello 40BF3 oil burner with pressure switch system for proving airflow, intake air collar and vent adapter. Vent pipe kits sold separately.

### HML/HMLV/HTL/HTLV Highboy Upflow Models

- **Cabinet construction** – 22 gauge steel cabinet ensures strength and quiet operation. Access door easily removed to access enclosed burner & controls.
- **PSC Blower Motor (HML/HTL Models)** – Designed for heavy duty continuous operation. Thermally protected. Four-speed is standard with 1/2 HP direct drive models.
- **ECM Variable Speed Blower Motor (HMLV/HTLV Models)** – Maximizes air conditioner efficiencies, reduces electrical operating costs and enhances comfort with programmed ramp up and ramp down operation. Available on 1/2 HP direct drive models.
- **Controls** – (UTEC) Electronic fan timer control is standard on all models.
- **Air conditioning** – Fan timer control is AC ready.
- **Direct Vent Models** – Include Beckett AFII-85 or Riello 40BF3 oil burner with pressure switch system for proving airflow, intake air collar and vent adapter. Vent pipe kits sold separately.

### WML/WMLV/MPL Highboy Downflow/Horizontal Models

- **Cabinet construction** – 22 gauge steel cabinet ensures strength and quiet operation. WML/WMLV models may be factory equipped with vestibule compartment to enclose burner & controls. Vestibule compartment for WML/WMLV also available as an after-market kit for non-factory equipped units.
- **PSC Blower Motor (WML/MPL Models)** – Designed for heavy duty continuous operation. Thermally protected. Four-speed is standard with 1/2 HP (WML) and 3/4 HP (MPL) direct drive models.
- **ECM Variable Speed Blower Motor (WMLV Models)** – Maximizes air conditioner efficiencies, reduces electrical operating costs and enhances comfort with programmed ramp up and ramp down operation. Available on 1/2 HP direct drive models.
- **Controls** – (UTEC) Electronic fan timer control is standard on all models.
- **Air conditioning** – Fan timer control is AC ready.
- **Direct Vent Models** – Include Beckett AFII-85 (WML/WMLV) or Beckett AFII-150 (MPL) or Riello 40BF3 (WML) oil burner with pressure switch system for proving airflow, intake air collar and vent adapter. Vent pipe kits sold separately.



### ECR International

2201 Dwyer Ave., Utica, NY 13504

Phone: (315) 797-1310 or

(800) 325-5479

Fax: (315) 724-9319

Web: [www.olsenhvac.com](http://www.olsenhvac.com)

### In Canada:

Contact ECR Master Representative:

Morden National Sales

Phone: 519-627-0791

Fax: 866-835-6667