

Cast Iron Gas-Fired Water Boiler

Quality Engineered for Efficiency and Dependability

OMGB Series



Olsen
Heating & Cooling Products

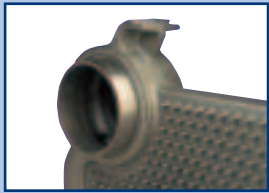
An ECR International Ltd. Brand

OMGB Series

Gas-Fired Water Boiler

Warm-Up To Higher Efficiency With The OMGB

The OMGB Series boiler features an advanced heat exchanger design that utilizes atmospheric burners allowing it to be vented vertically through a chimney. This heat exchanger design combined with quality components such as a flue damper and electronic ignition helps the OMGB achieve fuel efficiencies up to 84.1%, making it an ideal choice for new or existing homes.

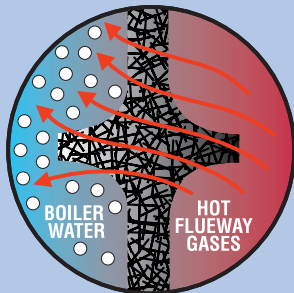


Quality Cast Iron Heat Exchanger

The OMGB utilizes cast iron construction because of its durability and efficient heat

transfer capabilities. Cast iron sections and push nipples are an integral part of each OMGB heat exchanger. Dual thermal flow speeds heat transfer. Hot flueway gases pass around hundreds of staggered studs on the flueway wall, providing rapid heat transfer to the boiler water.

Internal baffles agitate the circulating water, so it heats quickly and uniformly. Using only the highest quality cast iron and heat transfer designs ensure that the OMGB will provide many years of efficient and trouble-free operation.

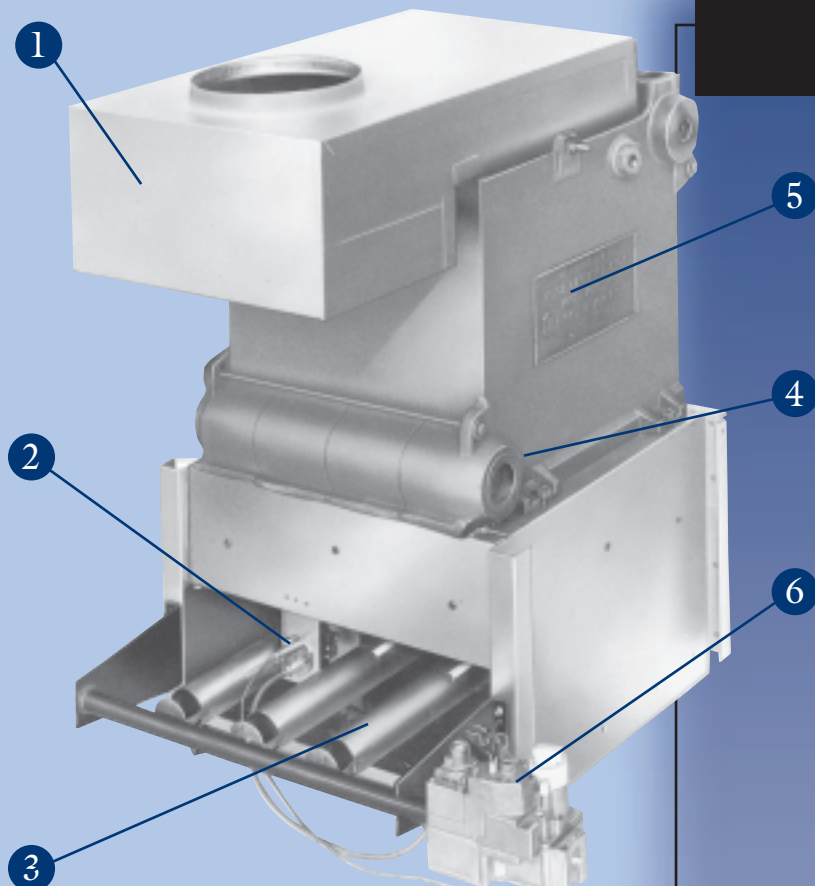


High Energy Efficiency and Lower Heating Costs

With efficiency ratings as high as 84.1%, the OMGB provides increased energy savings resulting in lower fuel bills. With the potential cost savings this represents, the OMGB boiler will pay for itself in a few short years.

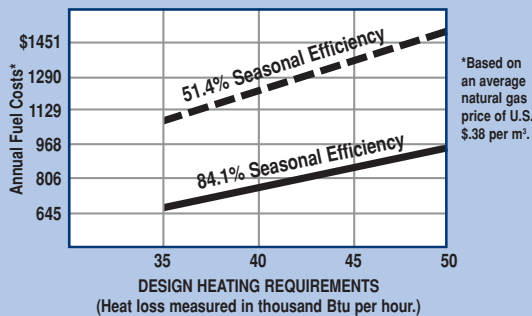
Stainless Steel Burners

Corrosion resistant atmospheric stainless steel burners are incorporated into each OMGB boiler delivering uniform flame patterns that optimize combustion efficiency and quiet operation.



Compare The Difference High Efficiency Makes

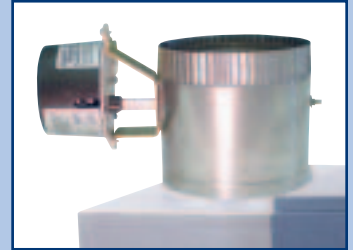
With efficiency ratings as high as 84.1%, the OMGB provides increased energy savings resulting in lower fuel bills.



This graph illustrates the difference in annual operating costs between boilers with higher and lower efficiencies. Boilers installed years ago have seasonal efficiencies as low as 50%. So, your savings in fuel dollars with Olsen's OMGB boiler can repay its installed cost in a few short years!

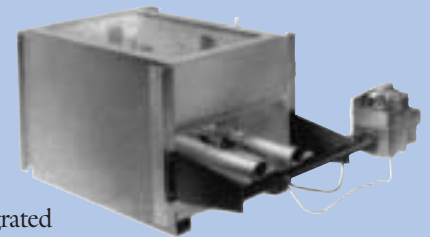
Fuel Saving Components

Advanced engineering can be found in every part of a OMGB boiler. The "on-demand" ignition control eliminates wasted fuel associated with a continuously burning pilot light. In addition, an integrated automatic vent damper closes when the burner shuts off, preventing heat from leaving through the chimney saving fuel and heating costs.



Easy Installation and Maintenance

A compact design and special packaging features make the OMGB boiler easy to install and service. An integrated flue collector and draft hood allows for easier installation in height restricted and cramped areas. The pilot assembly is easily accessible, located on the orifice side of the burners, out of the main combustion area. The OMGB comes factory-assembled, wired and tested to eliminate costly field assembly and reduce installation time.



OMGB Boiler Details.

- 1 Integrated Draft Hood
- 2 Pilot Assembly
- 3 Corrosion Resistant Atmospheric Stainless Steel Burners
- 4 Cast-Iron Push Nipples
- 5 Cast-Iron Heat Exchanger
- 6 Gas Valve

Manufacturers Limited Lifetime Warranty

ECR International Ltd. – Olsen Division backs its residential, cast-iron heat exchangers with a Limited Lifetime Warranty. This Warranty is meant to protect your investment, but is also offered to illustrate our commitment to customer satisfaction.

Key OMGB Boiler Features

- Cast-iron sections and push nipples
- Automatic Stack Damper
- Corrosion resistant stainless steel burners
- Energy Efficiency Ratings up to 84.1%
- Electronic Ignition
- Integral draft hood, natural draft chimney vented

OMGB Series

Gas-Fired Water Boiler

Gas-Fired/Natural or Propane

BOILER NO.	C.S.A. INPUT BTU/HR.	HEATING CAPACITY BTU/HR.	I=B=R ** NET OUTPUT BTU/HR.	NATURAL * GAS INLET	DIMENSIONS						PUMP SIZE SUPPLY & RETURN TAPPINGS	NO. OF BURNERS	ANNUAL FUEL UTILIZATION EFFICIENCY (AFUE) ELECTRONIC IGNITION & DAMPER
					A	B	C	D	E	F			
OMGB-50	50,000	42,000	37,000	1/2"	11 1/8"	5 1/2"	4"	30 3/4"	36 1/4"	6"	1 1/4"	1	84.1
OMGB-75	75,000	63,000	55,000	1/2"	15"	7 1/2"	5"	30 3/4"	37 3/4"	6"	1 1/4"	2	83.1
OMGB-100	100,000	83,000	72,000	1/2"	15"	7 1/2"	6"	30 3/4"	37 1/4"	6 1/2"	1 1/4"	2	83.0
OMGB-125	125,000	104,000	90,000	1/2"	18 7/8"	9 1/2"	6"	30 3/4"	37 1/4"	6 1/2"	1 1/4"	3	82.0
OMGB-150	150,000	124,000	108,000	1/2"	18 7/8"	9 1/2"	7"	30 3/4"	37 3/4"	7"	1 1/4"	3	83.0
OMGB-175	175,000	143,000	124,000	1/2"	22 3/4"	11 3/8"	7"	30 3/4"	38 3/4"	7"	1 1/4"	4	81.0
OMGB-200	200,000	165,000	143,000	1/2"	22 3/4"	11 3/8"	8"	30 3/4"	38 3/4"	8"	1 1/4"	4	81.9
OMGB-250	250,000	205,000	178,000	3/4"	26 5/8"	13 1/4"	8"	32 3/4"	40 3/4"	8"	1 1/4"	5	80.5
OMGB-300	299,999	243,000	214,000	3/4"	30 1/2"	15 1/4"	9"	32 3/4"	42 3/4"	10"	1 1/4"	6	80.0

* Propane Gas Inlet, all units, 1/2"

** For equivalent square feet of radiation, divide I=B=R output by 150.

STANDARD EQUIPMENT: Boiler jacket, cast iron boiler sections, combination aquastat relay, theraltimeter gauge, circulator, main gas burners, combination 24-volt gas control, A.S.M.E. relief valve, drain cock, stack damper and wiring harness, blocked-vent and roll-out safety switches, interrupted electronic ignition pilot system, and non-linting safety pilot.

OPTIONAL EQUIPMENT: Combustible floor kit. Conversion Kits: Natural Gas to Propane or Propane to Natural Gas.

Explanation Notes

All boilers are design-certified for installation on non-combustible floors.

For installation on any combustible floor, use combustible floor kit. This will increase vertical dimensions approximately 1 1/8 inches.

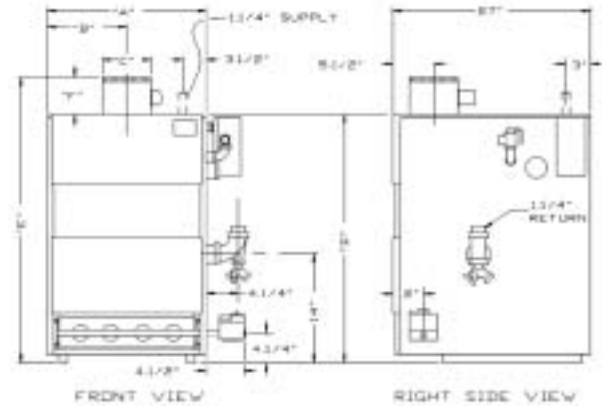
Recommended chimney height 20 feet. In special cases where conditions permit, chimney height may be reduced to 10 feet.

For elevations above 2000 feet, ratings should be reduced at a rate of 4% for each 1000 feet above sea level.

Net I=B=R ratings include 15% allowance for normal piping and pickup load. Manufacturer should be consulted on installations having other than normal piping and pickup requirements.

Specifications and dimensions are subject to change without notice.

Dimensions



TESTED FOR 100 LBS. ASME WORKING PRESSURE

Your Assurance Of Quality

All Olsen products are designed, tested, and assembled to ensure that you get the very best in home heating and cooling comfort and value. Each one meets or exceeds all recognized safety, performance and efficiency standards.

For more information on Olsen heating and cooling products contact your local ECR International Ltd. - Olsen Division distributor or call our customer service department at 1-888-259-7253.



ECR International Ltd. - Olsen Division • 6800 Base Line, Wallaceburg, Ont. Canada N8A 5E5

Tel. 519-627-0791 • Fax 519-627-4719 • Web Site: www.ecrltd.com • E-Mail: sales@olsenhvac.com