

oil furnaces

keeping families warm for more than 60 years



Reliable, Efficient Home Heating:

- Variable Speed Technology
- Easy Installation & Maintenance
- Optional Cooling Up to 5 Tons

Lowboy

BCL, BFL, BML, BMLV
59,000 - 237,000 BTU

Highboy

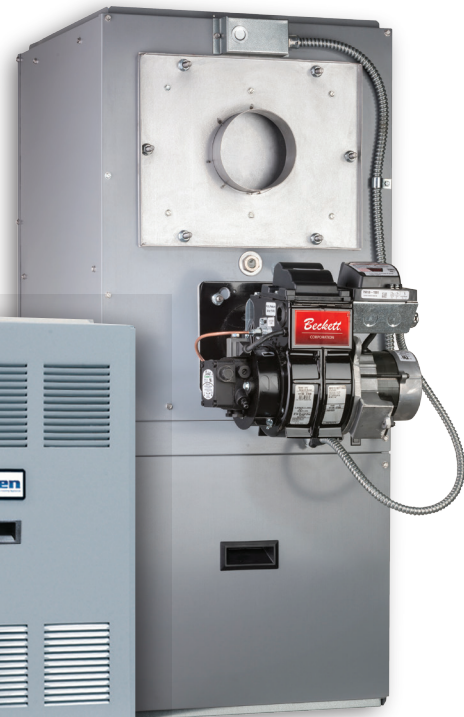
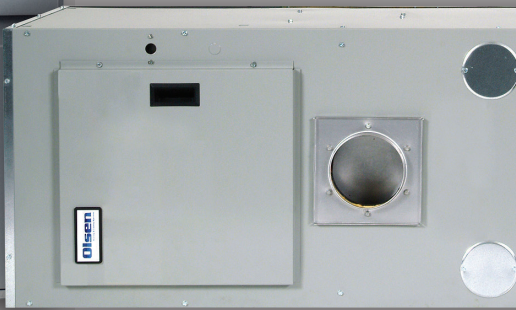
HML, HMLV, HTL, HTLV
59,000 - 113,000 BTU

Multiposition

WML, WMLV, MPL
59,000 - 128,000 BTU

Universal

UML
66,000 - 99,000 BTU



Olsen Home Heating Economics 101

An oil furnace uses two energy sources, oil to produce heat and electricity to power the fan motor but there's more to consider than just that.

FEATURE:

BENEFIT:

ADDITIONAL BENEFITS:

OIL COSTS

Higher Olsen AFUE Ratings

(Annual Fuel Utilization Efficiency)

= Lower Fuel Costs

+ Bonus Cash Back
(Through energy efficiency rebates).*

ELECTRICITY COSTS

Olsen Variable SpeedTechnology

An oil furnace with an ECM (Electronically Commutated Motor) can reduce electricity consumption up to †80%.

= Lower Electric Costs

+ Bonus Cash Back
(Through energy efficiency rebates).*

OTHER COSTS AND CONSIDERATIONS

DIRECT VENT SIDEWALL

Olsen Direct Sidewall Venting

As homes age, the chimney can become costly to maintain or repair.

- Eliminates Chimney Costs
+ Increases Combustion Efficiency

Requires only one wall opening, an Olsen Direct Sidewall Vent Kit (includes all connections from the furnace) and an Olsen concentric vent.

(The Olsen vent terminal utilizes a two-pipe combustion air/exhaust gas configuration. Outside air is used for combustion resulting in greater efficiency and safety. The burner provides the necessary pressure for venting of flue products – no additional motors or controls are needed).

Exceptional Heat Exchanger Designs

+ Delivers Higher AFUE

Multi Pass Heat Exchanger (Heavy-gauge construction and large surface area maximize heat transfer)
Chamberless Design (UML only)

Service & Maintenance

Equipped for easy service and maintenance.

= Lower Costs of Good Design

Easy Access Clean Outs (Provide easy access for quick, efficient routine maintenance)

Features like the slide out blower tray on high-boy models provide technicians easy access to critical components. Full length rails eliminate annoying/time consuming remounting of blower and motor housings, saving time and money on service.

Warranty

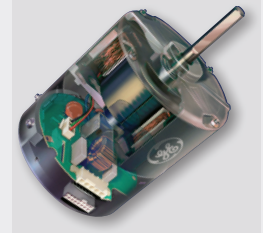
Olsen furnaces are designed to provide years of trouble-free operation.

= Peace of Mind

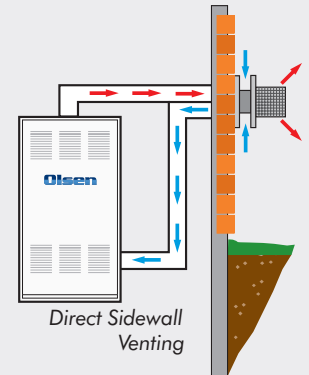
+ Limited Lifetime Warranty (Heat Exchanger),
5 Years Parts



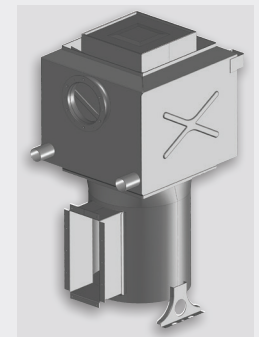
Calculate Your Savings



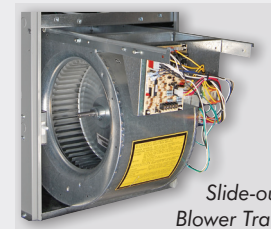
ECM Fan Motor



Direct Sidewall Venting



Exceptional Heat Exchanger Design



Slide-out Blower Tray



Chamberless Heat Exchanger (UML only)

*(Check with your local government agencies and/or utilities regarding the availability of rebates and incentives).

†Individual savings may vary.

UNIVERSAL HORIZONTAL/DOWNFLOW/UPFLOW MODELS

	FURNACE DIMENSIONS (INCHES)			MODEL	FIRING RATE GPH	INPUT/OUTPUT MBH'	AFUE EFFICIENCY % RATING			AVAILABLE MOTOR DRIVES	
	HEIGHT	WIDTH	DEPTH				BECKETT AFG	RIELLO 40F3	CARLIN EZ-LF	ECM (V) VARIABLE FAN SPEED	PSC DIRECT DRIVE
CHIMNEY VENTED	42 ³ / ₄	19	20 ³ / ₁₆	UML65A	0.55	77/66	87.5%				X
				UMLV65A**						X	
				UML65ARF				87.3%			X
				UMLV65ARF**						X	
				UML65AC					87.1%		X
				UMLV65AC						X	
				UML80A	0.65	91/77	87.0%				X
				UMLV80A**						X	
				UML80ARF				86.3%			X
				UMLV80ARF**						X	
				UML80AC		91/78			85.8%		X
				UMLV80AC						X	
				UML90A	0.75	105/88	85.2%				X
				UMLV90A						X	
				UML90ARF				85.2%			X
				UMLV90ARF						X	
				UML90AC					84.4%		X
				UMLV90AC						85.2%	X
				UML100A	0.85	119/99	84.4%				X
				UMLV100A						X	
				UML100ARF		119/98		84.8%			X
				UMLV100ARF						X	
				UML100AC		119/99			84.0%		X
				UMLV100AC						X	
DIRECT VENTED	42 ³ / ₄	19	20 ³ / ₁₆	UML65ANXU	0.55	77/65	85.8%				X
				UML65ARBU		77/66					X
				UMLV65ANXU**		77/65	85.7%			X	
				UMLV65ARBU**		77/66				X	
				UML80ANXU	0.65	91/76	84.4%				X
				UML80ARBU							X
				UMLV80ANXU**		91/77	85.2%			X	
				UMLV80ARBU**						X	
				UML90ANXU	0.75	105/86	83.5%				X
				UML90ARBU		105/87					X
				UMLV90ANXU		105/86	83.6%			X	
				UMLV90ARBU		105/87				X	
				UML100ANXU	0.85	119/98	83.3%			X	
				UML100ARBU							X
				UMLV100ANXU		119/97	83.3%				X
				UMLV100ARBU						X	

BOLD TYPE indicates factory equipped firing rate. Other firing rates shown utilize field supplied nozzles.

**** Energy Star Rated**

Additional Features

UML Universal Models

Horizontal, Downflow, Upflow Models

**AC RANGE IN
TONS BASED ON
400 CFM PER TON
AIR FLOW @ 0.50" W.C.
(CFM RANGE)**

3 Tons (738-1339)

3 Tons (510-1380)

3 Tons (738-1339)

3 Tons (510-1380)

3 Tons (510-1380)

3 Tons (510-1380)

3 Tons (738-1339)

3 Tons (510-1380)

3 Tons (738-1339)

3 Tons (510-1380)

3 Tons (510-1380)

3 Tons (510-1380)

3 Tons (738-1339)

3 Tons (510-1380)

3 Tons (738-1339)

3 Tons (510-1380)

3 Tons (510-1380)

3 Tons (510-1380)

3 Tons (738-1339)

3 Tons (510-1380)

3 Tons (738-1339)

3 Tons (510-1380)

3 Tons (510-1380)

3 Tons (510-1380)

3 Tons (510-1380)

3 Tons (738-1339)

3 Tons (738-1339)

3 Tons (510-1380)

3 Tons (510-1380)

3 Tons (738-1339)

3 Tons (738-1339)

3 Tons (510-1380)

3 Tons (510-1380)

3 Tons (738-1339)

3 Tons (510-1380)

3 Tons (510-1380)

3 Tons (510-1380)

3 Tons (510-1380)

3 Tons (510-1380)

3 Tons (510-1380)

1 Low Profile - 42.75"

Easily accommodates larger, high efficiency "A" coils in all job sites. Jacket is 22 gauge with 1/2" fiber reinforced foil faced fiberglass insulation. Closet rated for 1" clearances.

2 Dual-Pass Chamberless Heat Exchanger

With 409 stainless steel first pass drum and aluminized steel tube second pass. Stainless steel turbulators in each tube maximizes efficiency. Combination offers low pressure drop and large heat transfer surface ensuring high efficiency. 100% pressure tested.

3 Fan Limit

A snap disc limit is smartly located to eliminate potential overheating and premature heat exchanger fatigue.

4 Electronic Fan Timer Control

Located on full rail slide out blower deck for easy access for wiring, adjustment and service. Wiring is color coded, equipped with connections for easy air conditioning, humidifier and air cleaner installation. A terminal strip is also supplied for thermostat connections.

5 Easy to Clean

Remove flue collar for complete access to clean second pass tubes. Remove burner for complete access to clean first pass drum. Any oil drips are "evaporated" on the chamberless stainless steel drum.

6 Washable Filter System

Features filter rack and a washable filter. The filter rack can double as a transition piece if the installer wishes to use a Buffalo Boot instead.

7 Burner Options

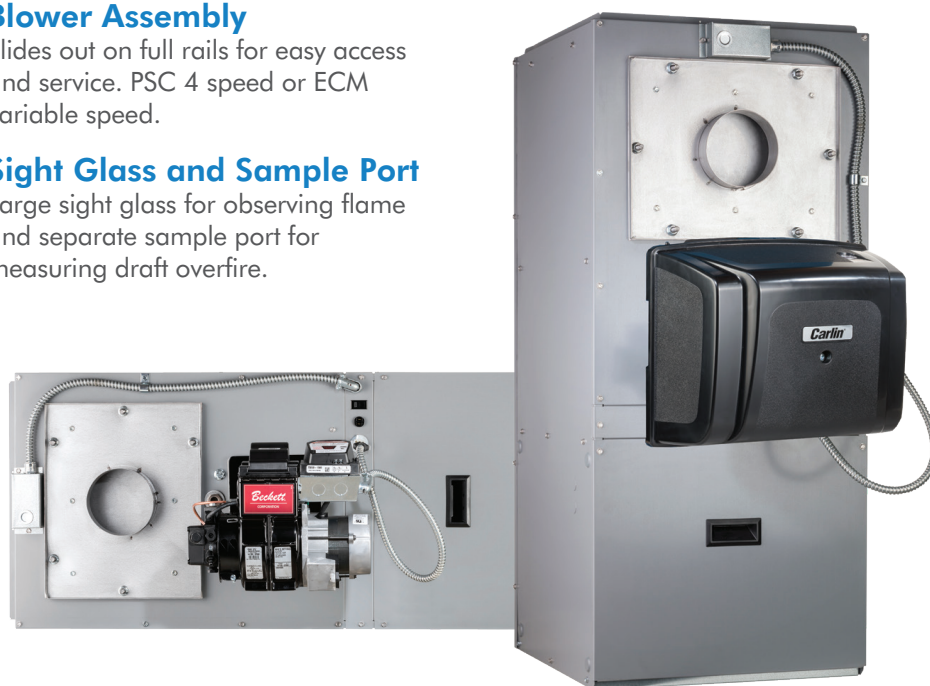
Includes factory supplied solenoid valve on pump for cleaner and quieter operation with reduced maintenance. Chimney Vent is available with choice of the Beckett AFG, Riello 40F3, or Carlin EZ-LF burner. Direct Vent is available with choice of the Beckett NX or Riello 40BF. Other options include downflow floor base kit and blocked vent safety switch.

8 Blower Assembly

Slides out on full rails for easy access and service. PSC 4 speed or ECM variable speed.

9 Sight Glass and Sample Port

Large sight glass for observing flame and separate sample port for measuring draft overfire.



Ratings and specifications are subject to change without notice.

LOWBOY MODELS

BREECH	FURNACE DIMENSIONS (INCHES)			MODEL	FIRING RATE GPH	INPUT/ OUTPUT MBH¹	AFUE EFFICIENCY % RATING				
							CHIMNEY VENT			DIRECT VENT	
	HEIGHT	WIDTH	DEPTH				BECKETT	BECKETT NX	RIELLO F	BECKETT AFII	RIELLO BF
REAR FLUE MODEL	41	22	51½	BCL90S2	0.75	105/90	85.5%				
				BCL90S2							
				BCL90S2							
				BCL90ST2							
				BCL100S2	0.85	119/100	83.2%				
				BCL100S2							
				BCL100S2							
				BCL100ST2							
				BCL120S2	1.00	140/118	84.4%				
				BCL120S2							
				BCL120S2							
				BCL120ST2							
				BCL130S2	1.10	154/130	84.5%				
				BCL130S2							
				BCL130ST2							
				BCL145S2							
				BCL145S2	1.20	168/141	84.0%				
				BCL145ST2							
	56	26	49	BCL170-2	1.50	210/177	83.3%				
				BCL190	1.65	231/194	83.7% T				
				BCL200	1.75	245/205	83.7% T				
				BCL225	2.00	280/237	84.6% T				
	41	22	51½	BCL90SRF2	0.75	105/91	Chimney Vented with Riello F		87.2%		
				BCL100SRF2	0.85	119/102			86.2%		
				BCL90SB2U2	0.75	105/91	Direct Vented with Beckett AF II			87.1%	
				BCL100SB2U2	0.85	119/102				86.0%	
				BCL120SB2U2	1.00	140/119				85.1%	
FRONT FLUE MODEL	41	22	51½	BFL90-2	0.75	105/88	83.8%				
				BFL90-2							
				BFL90-2							
				BFL90T2							
				BFL100-2	0.85	119/100	83.6%				
				BFL100-2							
				BFL100-2							
				BFL100T2							
				BFL120-2	1.00	140/114	83.0%				
				BFL120-2							
				BFL120-2							
				BFL120T2							
				BFL130-2	1.00	154/128	82.4%				
				BFL130-2							
				BFL130T2							
				BFL145-2	1.20	168/139	81.8%				
				BFL145-2							
				BFL145ST2							
				BFL145NX2	1.20	168/139	Chimney Vented with Beckett NX	83.1%			
				BFL145NX2							
				BFL145TNX2							
				BFL90RF-2	0.75	105/90	Chimney Vented with Riello F		85.6%		
				BFL100RF2	0.85	119/102			85.3%		
				BFL90B2U2	0.75	105/90	Direct Vented with Beckett AF II			86.4%	
				BFL100B2U2	0.85	119/101				85.4%	
				BFL120B2U2	1.00	140/117				83.7%	

GREEN TINTED AREA indicates models do not meet U.S. efficiency standards. Sold in Canada only.

BOLD TYPE indicates factory equipped firing rate. Other firing rates shown utilize field supplied nozzles. T = Thermal Efficiency

AVAILABLE MOTOR DRIVES			AC RANGE IN TONS BASED ON 400 CFM PER TON AIR FLOW @ 0.50" W.C. (CFM RANGE)	COOLING COILS SELECTION
ECM (V) VARIABLE FAN SPEED	PSC DIRECT DRIVE	PSC BELT DRIVE		
		1/3 HP		BCL 90 to 145 Cased Cooling Coils 2 ton CC24A3G-220R-066 2.5 ton CC30C3G-220R-066 3 ton CC36B3G-220R-066 3.5 ton CC42C3G-220R-066 4 ton CC48B3G-220R-066 5 ton CC60D3G-260R-066
		1/2 HP		
	1/2 HP		3 to 4 tons (1000 - 1600)	
	1 HP		3 to 5 tons (1300 - 2000)	
		1/3 HP		
		1/2 HP		
	1/2 HP		3 to 4 tons (1000 - 1600)	
	1 HP		3 to 5 tons (1300 - 2000)	
		1/3 HP		
		1/2 HP		
	1/2 HP		3 to 4 tons (1000 - 1600)	
	1 HP		3 to 5 tons (1300 - 2000)	
		1/2 HP		BCL 170 to 225 Cased Cooling Coil 3 to 4 ton N/A 5 ton CC60D3G-260R-066
		1/2 HP		
	1/2 HP		3 to 4 tons (1000 - 1600)	
	1 HP		3 to 5 tons (1300 - 2000)	
		3/4 HP		
		3/4 HP	3 to 4 tons (1300 - 1550)	
		1 HP		
		1 HP	3 to 5 tons (1600 - 2200)	
	1/2 HP			
	1 HP			
			3 to 4 tons (1000 - 1600)	
		1/3 HP		BCL 90 to 120 Cased Cooling Coils 2 ton CC24A3G-220R-066 3 ton CC36B3G-220R-066 3.5 ton CC42C3G-220R-066
		1/2 HP		
	1/2 HP		3 to 4 tons (1000 -1600)	
	1 HP		3 to 5 tons (1300 - 2000)	
		1/3 HP		
		1/2 HP		
	1/2 HP		3 to 4 tons (1000 - 1600)	
	1 HP		3 to 5 tons (1300 - 2000)	
		1/3 HP		
		1/2 HP		
	1/2 HP		3 to 4 tons (1000 - 1600)	
	1 HP		3 to 5 tons (1300 - 2000)	
		1/2 HP		
		1/2 HP		
	1/2 HP		3 to 4 tons (1000 - 1600)	
	1 HP		3 to 5 tons (1300 - 2000)	
		1/2 HP		
	1/2 HP		3 to 4 tons (1000 - 1600)	
	1 HP		3 to 5 tons (1300 - 2000)	
		1/2 HP		
	1/2 HP		3 to 4 tons (1000 - 1600)	
	1 HP		3 to 5 tons (1300 - 2000)	
		1/2 HP		
	1/2 HP		3 to 4 tons (1000 -1600)	
	1 HP			
			3 to 4 tons (1000 -1600)	

Ratings and specifications are subject to change without notice.

LOWBOY MODELS (continued)

BREECH	FURNACE DIMENSIONS (INCHES)			MODEL	FIRING RATE GPH	INPUT/ OUTPUT MBH ¹	AFUE EFFICIENCY % RATING				
							CHIMNEY VENT			DIRECT VENT	
	HEIGHT	WIDTH	DEPTH				BECKETT	BECKETT NX	RIELLO F	BECKETT AFII	RIELLO BF
REAR FLUE MODEL	32	22	51½	BML60B2	0.50	70/59	84.0%				
				BML60B2							
				BMLV60B2							
				BML80B2	0.65	91/76	84.0%				
				BML80B2							
				BMLV80B2							
				BML90B2	0.75	105/85	83.0%				
				BML90B2							
				BMLV90B2							
				BML60BRF2	0.50	70/60	Chimney Vented with Riello F			86.4%	
				BML60BRF2							
				BMLV60BRF2							
				BML80BRF2	0.65	91/77				85.2%	
				BML80BRF2							
				BMLV80BRF2							
				BML90BRF2	0.75	105/88				83.0%	
				BML90BRF2							
				BMLV90BRF2							
				BML60BB2U2	0.55	70/59	Direct Vented with Beckett AF II			85.6%	
				BML60BB2U2							
				BMLV60BB2U2							
				BML80BB2U2	0.65	91/76				84.3%	
				BML80BB2U2							
				BMLV80BB2U2							
				BML90BB2U2	0.75	105/88				83.8%	
				BML90BB2U2							
				BMLV90BB2U2							
				BML60BRBU2	0.50	70/61	Direct Vented with Riello BF			87.2%	
				BML60BRBU2							
				BMLV60BRBU2							
				BML80BRBU2	0.65	91/78				86.1%	
				BML80BRBU2							
				BMLV80BRBU2							
				BML90BRBU2	0.75	105/89				84.7%	
				BML90BRBU2							
				BMLV90BRBU2							

BOLD TYPE indicates factory equipped firing rate. Other firing rates shown utilize field supplied nozzles.

AVAILABLE MOTOR DRIVES			AC RANGE IN TONS BASED ON 400 CFM PER TON AIR FLOW @ 0.50" W.C. (CFM RANGE)	COOLING COILS SELECTION
ECM (V) VARIABLE FAN SPEED	PSC DIRECT DRIVE	PSC BELT DRIVE		
	1/2 HP	1/2 HP	<p>PSC Motor Airflow Ratings 2 to 3.5 Tons (700-1400)</p> <p>ECM Motor Airflow Ratings (V Models) 1/2 HP ECM Motor 600-1200 cfm @ 0.5" w.c.</p>	<p>BML Cased Cooling Coils</p> <p>2 ton CC24A3G-220R-066 2.5 ton CC30C3G-220R-066 3 ton CC36B3G-220R-066</p>
1/2 HP ECM				
	1/2 HP	1/2 HP		
1/2 HP ECM				
	1/2 HP	1/2 HP		
1/2 HP ECM				
	1/2 HP	1/2 HP		
1/2 HP ECM				
	1/2 HP	1/2 HP		
1/2 HP ECM				
	1/2 HP	1/2 HP		
1/2 HP ECM				
	1/2 HP	1/2 HP		
1/2 HP ECM				
	1/2 HP	1/2 HP		
1/2 HP ECM				
	1/2 HP	1/2 HP		
1/2 HP ECM				
	1/2 HP	1/2 HP		
1/2 HP ECM				
	1/2 HP	1/2 HP		
1/2 HP ECM				
	1/2 HP	1/2 HP		
1/2 HP ECM				

Ratings and specifications are subject to change without notice.

HIGHBOY MODELS

BREECH	FURNACE DIMENSIONS (INCHES)			MODEL	FIRING RATE GPH	INPUT/ OUTPUT MBH¹	AFUE EFFICIENCY % RATING				
							CHIMNEY VENT			DIRECT VENT	
	HEIGHT	WIDTH	DEPTH				BECKETT	BECKETT NX	RIELLO F	BECKETT AFII	RIELLO BF
FRONT FLUE MODEL	49 ^{5/8}	22	30 ^{3/4}	HML60C2	0.50	70/59	83.1%				
				HMLV60C2							
				HML80C2	0.65	91/76	83.3%				
				HMLV80C2							
				HML90C2	0.75	105/85	81.5%				
				HMLV90C2							
				HML100C2	0.85	119/96	79.1%				
				HMLV100C2							
				HML60CNX2	0.50	70/60	Chimney Vented with Beckett NX	86.4%			
				HMLV60CNX2				85.7%			
				HML80CNX2	0.65	91/76		84.3%			
				HMLV80CNX2				83.4%			
				HML90CNX2	0.75	105/88		Chimney Vented with Riello F			86.3%
				HMLV90CNX2							85.2%
				HML100CNX2	0.85	119/98					83.2%
				HMLV100CNX2							
				HML60CRF2	0.50	70/60	Direct Vented with Beckett AF II				84.6%
				HMLV60CRF2							83.9%
				HML80CRF2	0.65	91/77					83.3%
				HMLV80CRF2							
				HML90CRF2	0.75	105/87		Direct Vented with Riello BF			86.7%
				HMLV90CRF2							85.4%
				HML60CB2U2	0.55	77/65	84.5%				
				HMLV60CB2U2							
				HML80CB2U2	0.65	91/77					
				HMLV80CB2U2							
				HML90CB2U2	0.75	105/88					
				HMLV90CB2U2							
	HML60CRBU2	0.50	70/61								
	HMLV60CRBU2										
	HML80CRBU2	0.65	91/77								
	HMLV80CRBU2										
	HML90CRBU2	0.75	105/88								
	HMLV90CRBU2										
58	22	30 ^{3/4}	HTL90D2	0.75	105/84	83.4%					
			HTL100D2	0.85	119/101	84.0%					
			HTL120D2	1.00	140/117	83.0%					
			HTL90DRF2	0.75	105/91	Chimney Vented with Riello F	86.5%				
			HTLV90DRF2				85.3%				
			HTL100DRF2	0.85	119/102		84.1%				
			HTLV100DRF2								
			HTL115DRF2	0.95	133/113						
			HTLV115DRF2								

GREEN TINTED AREA indicates models do not meet U.S. efficiency standards. Sold in Canada only.

BOLD TYPE indicates factory equipped firing rate. Other firing rates shown utilize field supplied nozzles.

AVAILABLE MOTOR DRIVES			AC RANGE IN TONS BASED ON 400 CFM PER TON AIR FLOW @ 0.50" W.C. (CFM RANGE)	COOLING COILS SELECTION
ECM (V) VARIABLE FAN SPEED	PSC DIRECT DRIVE	PSC BELT DRIVE		
(V) 1/2 HP ECM motor 600 – 1200 cfm @ 0.5" w.c.	1/2 HP		2 to 3.5 Tons (690-1500)	<div>HML& HMLV Cased Cooling Coils</div> <div><div>2 ton</div><div>CC24A3G-220R-066</div><div>2.5 ton</div><div>CC30C3G-220R-066</div><div>3 ton</div><div>CC36B3G-220R-066</div><div>3.5 ton</div><div>CC42C3G-220R-066</div></div>
(V) 1/2 HP ECM motor 600 – 1200 cfm @ 0.5" w.c.	1/2 HP		2 to 3.5 Tons (650-1400)	<div>HTL & HTLV Cased Cooling Coils</div> <div><div>2 ton</div><div>CC24A3G-220R-066</div><div>2.5 ton</div><div>CC30C3G-220R-066</div><div>3 ton</div><div>CC36B3G-220R-066</div><div>3.5 ton</div><div>CC42C3G-220R-066</div></div>

Ratings and specifications are subject to change without notice.

MULTI-POSITION HORIZONTAL/DOWNFLOW MODELS

BREECH	FURNACE DIMENSIONS (INCHES)			MODEL	FIRING RATE GPH	INPUT/ OUTPUT MBH¹	AFUE EFFICIENCY % RATING				
							CHIMNEY VENT			DIRECT VENT	
	HEIGHT	WIDTH	DEPTH				BECKETT	BECKETT NX	RIELLO F	BECKETT AFII	RIELLO BF
FRONT FLUE MODEL	55 1/4	22	22 1/8	WML60C2	0.50	70/59	83.3%				
				WML60C2*							
				WMLV60C2							
				WMLV60C2*							
				WML80C2	0.65	91/76	82.8%				
				WML80C2*							
				WMLV80C2							
				WML90C2	0.75	105/86	81.8%				
				WMLV90C2							
				WML60CNX2	0.50	70/60	Chimney Vented with Beckett NX	86.3%			
				WMLV60CNX2							
				WML80CNX2	0.65	91/77			85.5%		
				WMLV80CNX2							
				WML90CNX2	0.75	105/88		85.0%			
				WMLV90CNX2							
				WML60CRF2	0.51	71/61	Chimney Vented with Riello F		85.2%		
				WMLV60CRF2							
				WML80CRF2	0.65	91/76		83.3%			
				WMLV80CRF2							
				WML90CRF2	0.75	105/88			83.4%		
				WMLV90CRF2							
				WML60CB2U2	0.55	77/63	Direct Vented with Beckett AF II	84.1%			
				WMLV60CB2U2							
				WML80CB2U2	0.65	91/75			83.6%		
				WMLV80CB2U2							
				WML90CB2U2	0.75	105/85		83.6%			
				WMLV90CB2U2							
				WML60CRBU2	0.51	71/62	Direct Vented with Riello BF			86.8%	
				WMLV60CRBU2							
				WML80CRBU2	0.65	91/78		86.1%			
				WMLV80CRBU2							
				WML90CRBU2	0.75	105/89			84.6%		
				WMLV90CRBU2							
	62	22 1/4	22 1/4	MPL90B2	0.75	105/90	85.0%				
				MPL100B2	0.85	119/97	83.2%				
				MPL120B2	1.00	140/118	83.3%				
				MPL130B2	1.10	154/128	82.1%				
				MPL90BRF2	0.75	105/92	Chimney Vent with Riello F	86.6%			
				MPL100BRF2	0.85	119/101		83.7%			
				MPL120BRF2	1.00	140/117		83.8%			
				MPL130BRF2	1.10	154/127		83.0%			
				MPL90BB2U2	0.75	105/88	Direct Vent with Beckett AF II	83.6%			
				MPL100BB2U2	0.85	119/101		84.5%			
				MPL120BB2U2	1.00	140/118		84.8%			

GREEN TINTED AREA indicates models do not meet U.S. efficiency standards. Sold in Canada only.
BOLD TYPE indicates factory equipped firing rate. Other firing rates shown utilize field supplied nozzles.
 * With Vestibule

AVAILABLE MOTOR DRIVES			AC RANGE IN TONS BASED ON 400 CFM PER TON AIR FLOW @ 0.50" W.C. (CFM RANGE)	COOLING COILS SELECTION
ECM (V) VARIABLE FAN SPEED	PSC DIRECT DRIVE	PSC BELT DRIVE		
(V) 1/2 HP ECM motor 600 – 1200 cfm @ 0.5" w.c.	1/2 HP		2 to 3 Tons (760-1500)	WML & WMLV Cased Cooling Coils 2 ton CE24A3G-220R-056 2.5 ton CE30C3G-220R-056 3 ton CE36B3G-220R-056
	3/4 HP		2 to 3 Tons (1185-1331)	MPL Cased Cooling Coils 2 ton CE24A3G-220R-056 2.5 ton CE30C3G-220R-056 3 ton CE36B3G-220R-056

Ratings and specifications are subject to change without notice.

Common Features:

All Olsen Oil Furnaces:

- **Heat Exchanger** – Proven heat exchanger design featuring 100% welded construction for maximum performance. Large accessible clean out ports.
- **Radiator** – “Wrap-around” style for maximum heat transfer.
- **Insulation** – Spun glass and aluminum foil for “hand-cool” cabinet.
- **Burner** – Equipped with industry leading Beckett or Riello oil burners which include oil solenoid valve, PSC motor and solid state controls. Factory assembled, wired and tested. Ready to connect to fuel line.
- **Barometric Draft Control** – Included with all chimney vent models.
- **Blower** – Direct drive or belt drive type. Permanently lubricated, resilient mounted.
- **Blower Assembly** – Entire unit can be easily removed for servicing.
- **Filter Racks & Washable Air Filters** – Included with all models.
- **Alternate firing rates** to fit a wide variety of applications (alternate nozzles are field supplied).



Made in North America,
Dunkirk, NY Plant.

Additional Features:

BCL/BCL-S/BFL Lowboy Models

- **Cabinet construction** – 22 gauge steel cabinet ensures strength and quiet operation. Access door easily removed to access enclosed burner & controls.
- **PSC Blower Motor** – Designed for heavy duty continuous operation. Thermally protected. Four-speed is standard with 1/2 HP direct drive models. Three-speed is standard with 1 HP direct drive models. Single speed with adjustable motor pulley is standard with belt drive models.
- **Controls** – (UTEC) Electronic fan timer is standard on all 1/3 HP and 1/2 HP models. (Honeywell or White Rodgers) Fan and limit control is standard on all 3/4 HP and 1 HP models.
- **Air conditioning** – Fan timer control is AC ready. Prewired fan center relay is standard on fan and limit equipped models with 1 HP direct drive blower.
- **Direct Vent Models** – Include Beckett AFII-150 oil burner with pressure switch system for proving airflow, intake air collar and vent adapter. Vent pipe kits sold separately.

BML/BMLV Compact Lowboy Models

- **Cabinet construction** – 22 gauge steel cabinet ensures strength and quiet operation. Access door easily removed to access enclosed burner & controls.
- **PSC Blower Motor** – Designed for heavy duty continuous operation. Thermally protected. Four-speed is standard with 1/2 HP direct drive models. Single speed with adjustable motor pulley is standard with belt drive models.
- **ECM Variable Speed Blower Motor (BMLV Models)** – Maximizes air conditioner efficiencies, reduces electrical operating costs and enhances comfort with programmed ramp up and ramp down operation. Available on 1/2 HP direct drive models.
- **Controls** – (UTEC) Electronic fan timer control is standard on all models.
- **Air conditioning** – Fan timer control is AC ready.
- **Direct Vent Models** – Include Beckett AFII-85 or Riello 40BF3 oil burner with pressure switch system for proving airflow, intake air collar and vent adapter. Vent pipe kits sold separately.

HML/HMLV/HTL/HTLV Highboy Upflow Models

- **Cabinet construction** – 22 gauge steel cabinet ensures strength and quiet operation. Access door easily removed to access enclosed burner & controls.
- **PSC Blower Motor (HML/HTL Models)** – Designed for heavy duty continuous operation. Thermally protected. Four-speed is standard with 1/2 HP direct drive models.
- **ECM Variable Speed Blower Motor (HMLV/HTLV Models)** – Maximizes air conditioner efficiencies, reduces electrical operating costs and enhances comfort with programmed ramp up and ramp down operation. Available on 1/2 HP direct drive models.
- **Controls** – (UTEC) Electronic fan timer control is standard on all models.
- **Air conditioning** – Fan timer control is AC ready.
- **Direct Vent Models** – Include Beckett AFII-85 or Riello 40BF3 oil burner with pressure switch system for proving airflow, intake air collar and vent adapter. Vent pipe kits sold separately.

WML/WMLV/MPL Highboy Downflow/Horizontal Models

- **Cabinet construction** – 22 gauge steel cabinet ensures strength and quiet operation. WML/WMLV models may be factory equipped with vestibule compartment to enclose burner & controls. Vestibule compartment for WML/WMLV also available as an after-market kit for non-factory equipped units.
- **PSC Blower Motor (WML/MPL Models)** – Designed for heavy duty continuous operation. Thermally protected. Four-speed is standard with 1/2 HP (WML) and 3/4 HP (MPL) direct drive models.
- **ECM Variable Speed Blower Motor (WMLV Models)** – Maximizes air conditioner efficiencies, reduces electrical operating costs and enhances comfort with programmed ramp up and ramp down operation. Available on 1/2 HP direct drive models.
- **Controls** – (UTEC) Electronic fan timer control is standard on all models.
- **Air conditioning** – Fan timer control is AC ready.
- **Direct Vent Models** – Include Beckett AFII-85 (WML/WMLV) or Beckett AFII-150 (MPL) or Riello 40BF3 (WML) oil burner with pressure switch system for proving airflow, intake air collar and vent adapter. Vent pipe kits sold separately.



ECR **international**
EST. 1928

A Family of Heating & Cooling Brands.

ECR International

2201 Dwyer Ave., Utica, NY 13504

Phone: (315) 797-1310 or

(800) 325-5479

Fax: (315) 724-9319

Web: www.olsenhvac.com

In Canada:

Contact ECR Master Representative:

Morden National Sales

Phone: 519-627-0791

Fax: 866-835-6667